

Automobiles

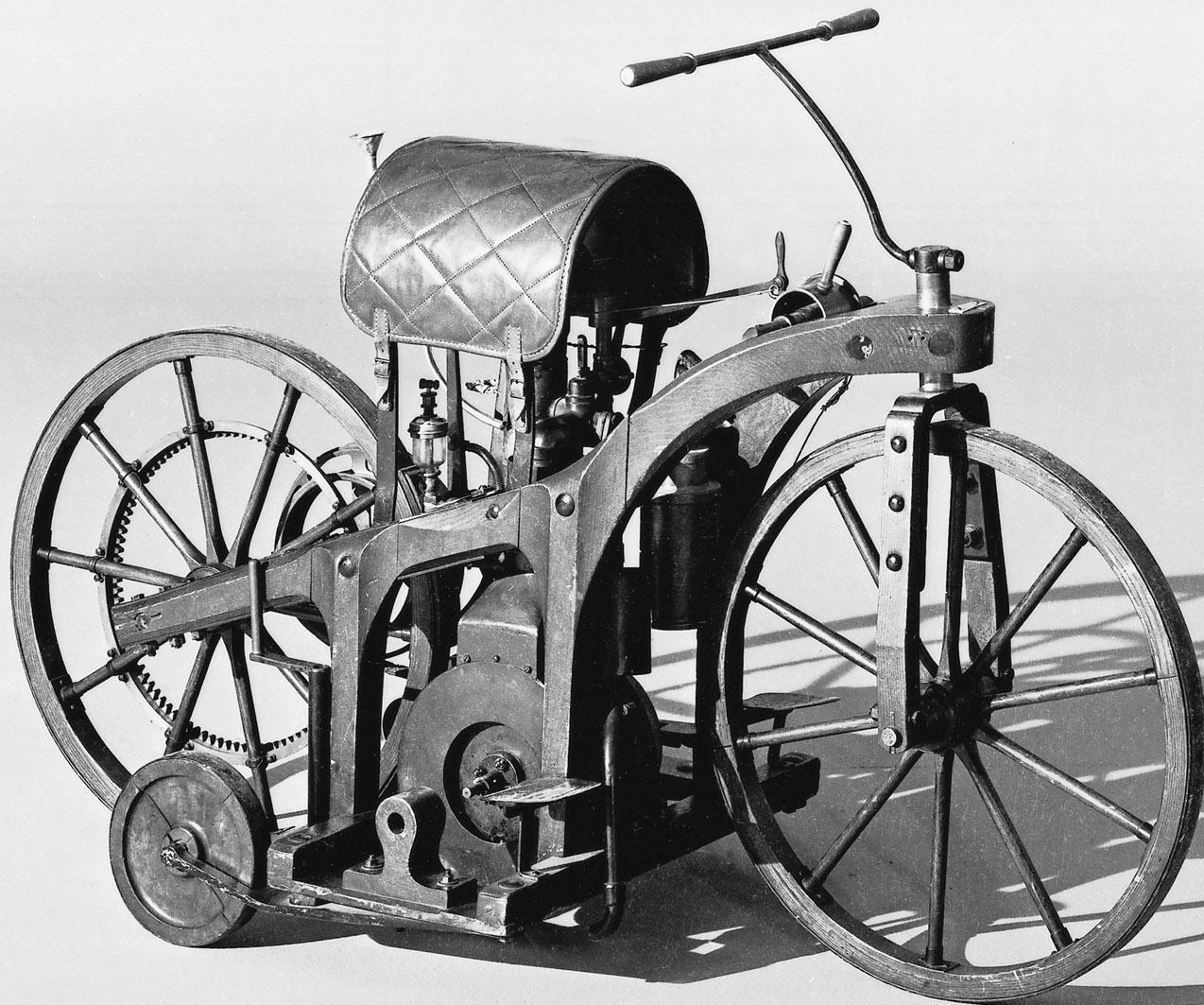
by Gene M. Adams, Ph.D.



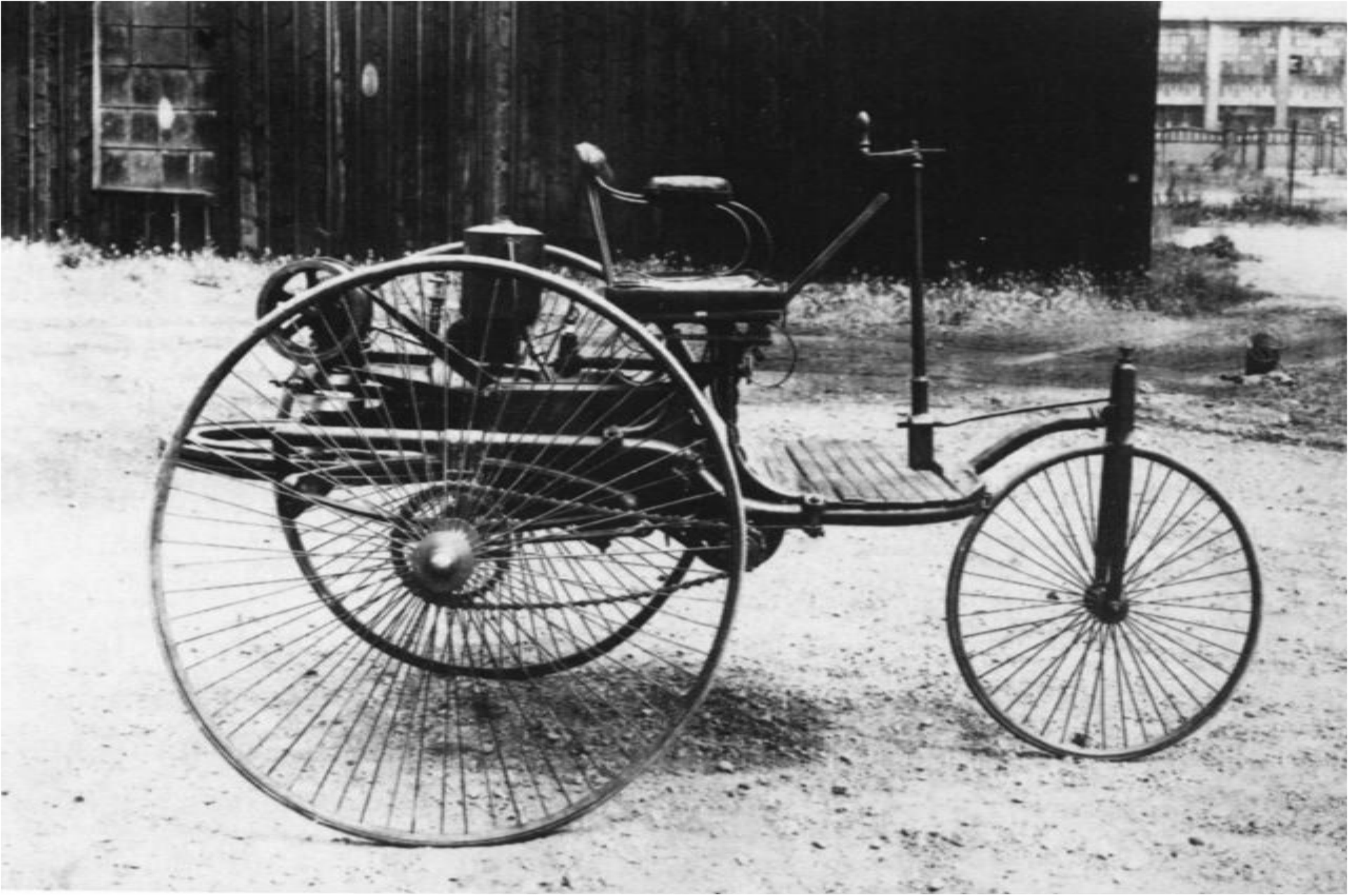
Cugnot 1770



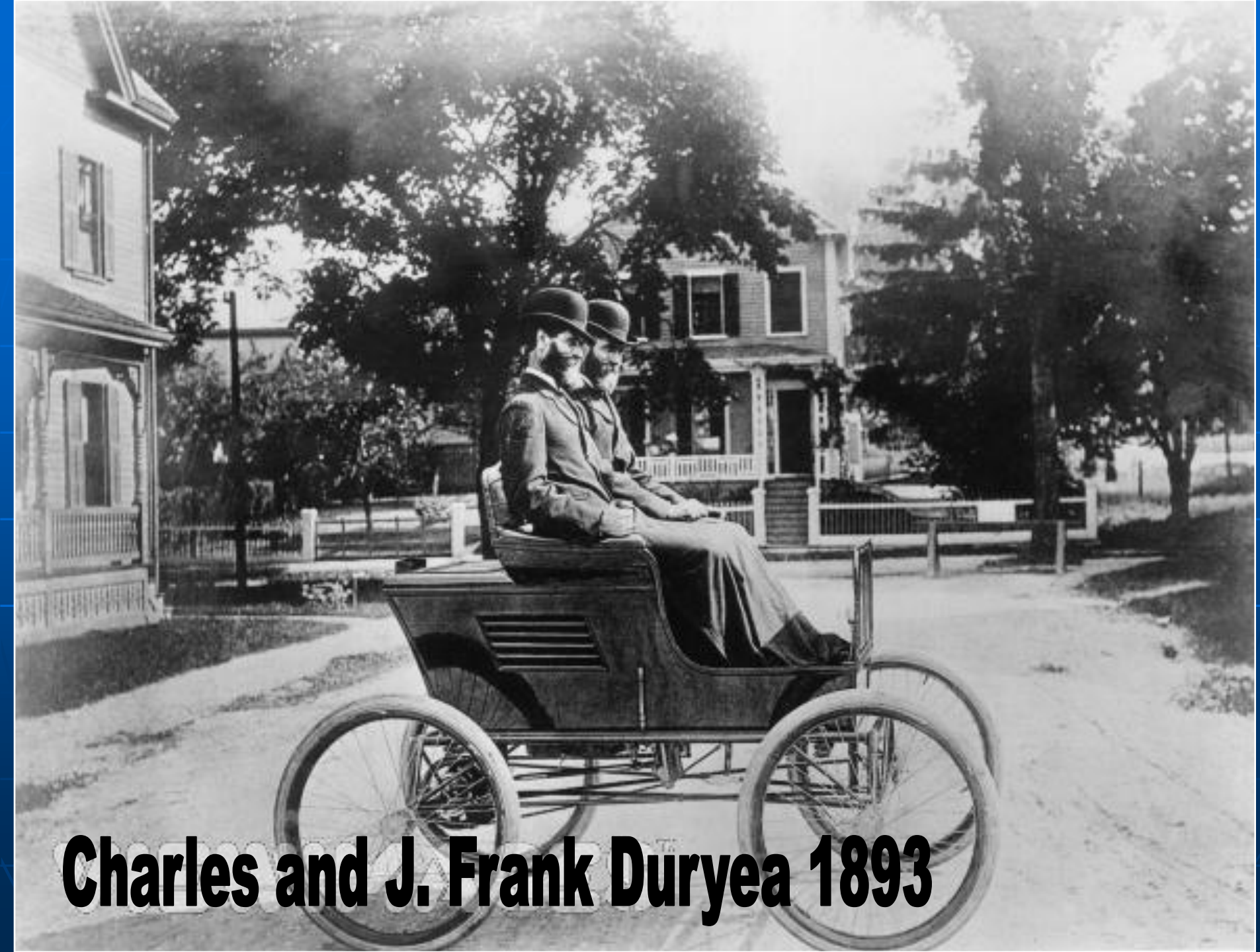
**Stanley
Steamer
1897**



Daimler 1885



Benz 1885



Charles and J. Frank Duryea 1893



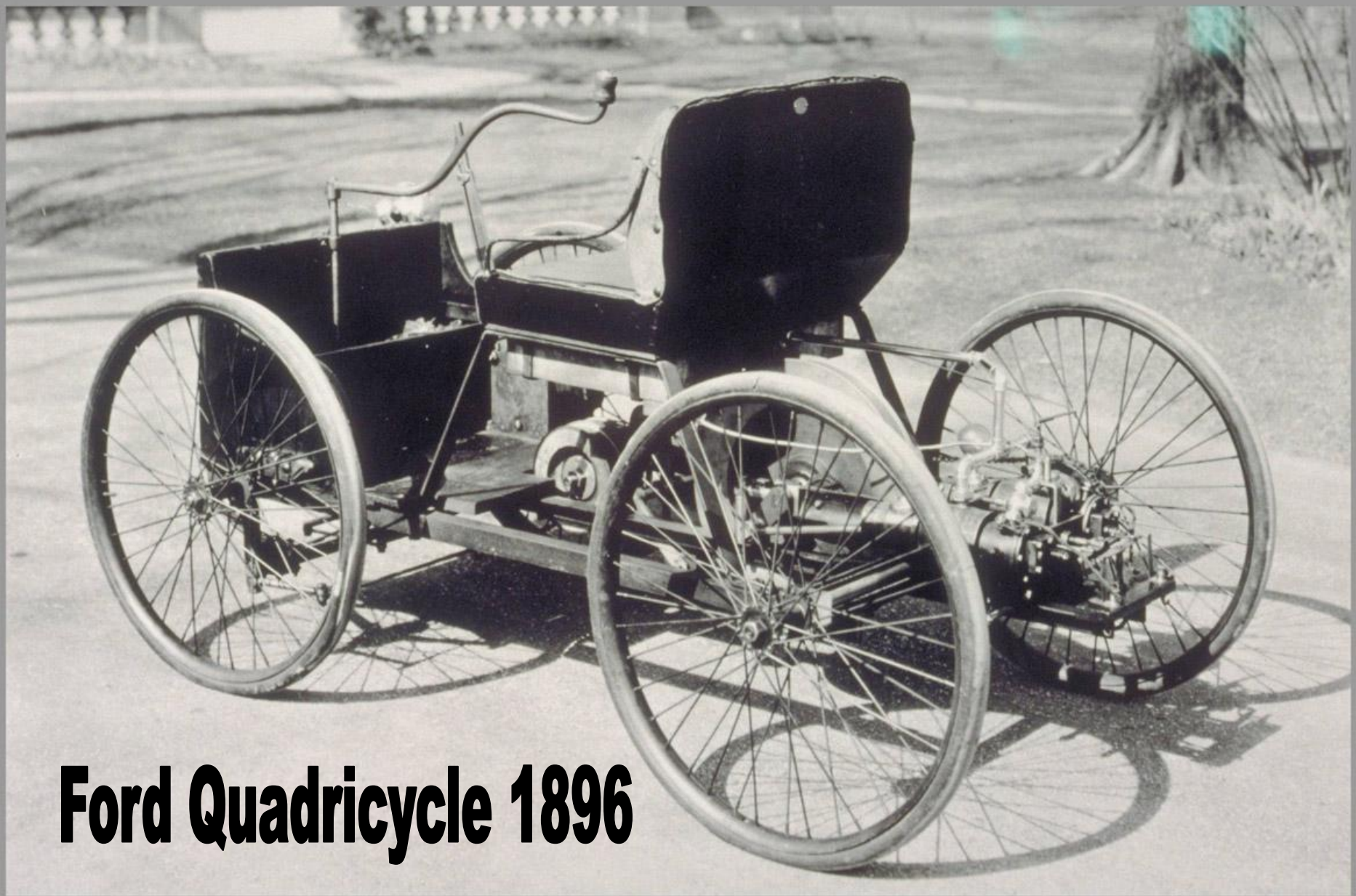
Duryea 1895



Ford Quadricycle 1896



Ford Quadricycle 1896



Ford Quadricycle 1896



Ford Model A - 1903



Ford Model K 1906



Ford Model T - 1908



Ford Model A - 1927



Ford Coupe - 1932



Ford Sedan - 1932



Tucker - 1948



Tucker - 1948



© 2004 RONALD C. DUKE

Chevrolet Bel Air - 1955



Chevrolet Bel Air - 1957



Corvette - 1953



Corvette - 1955



www.familycar.com

Corvette Stingray



Thunderbird - 1955



Thunderbird - 1957



Edsel - 1958

Corvair - 1960

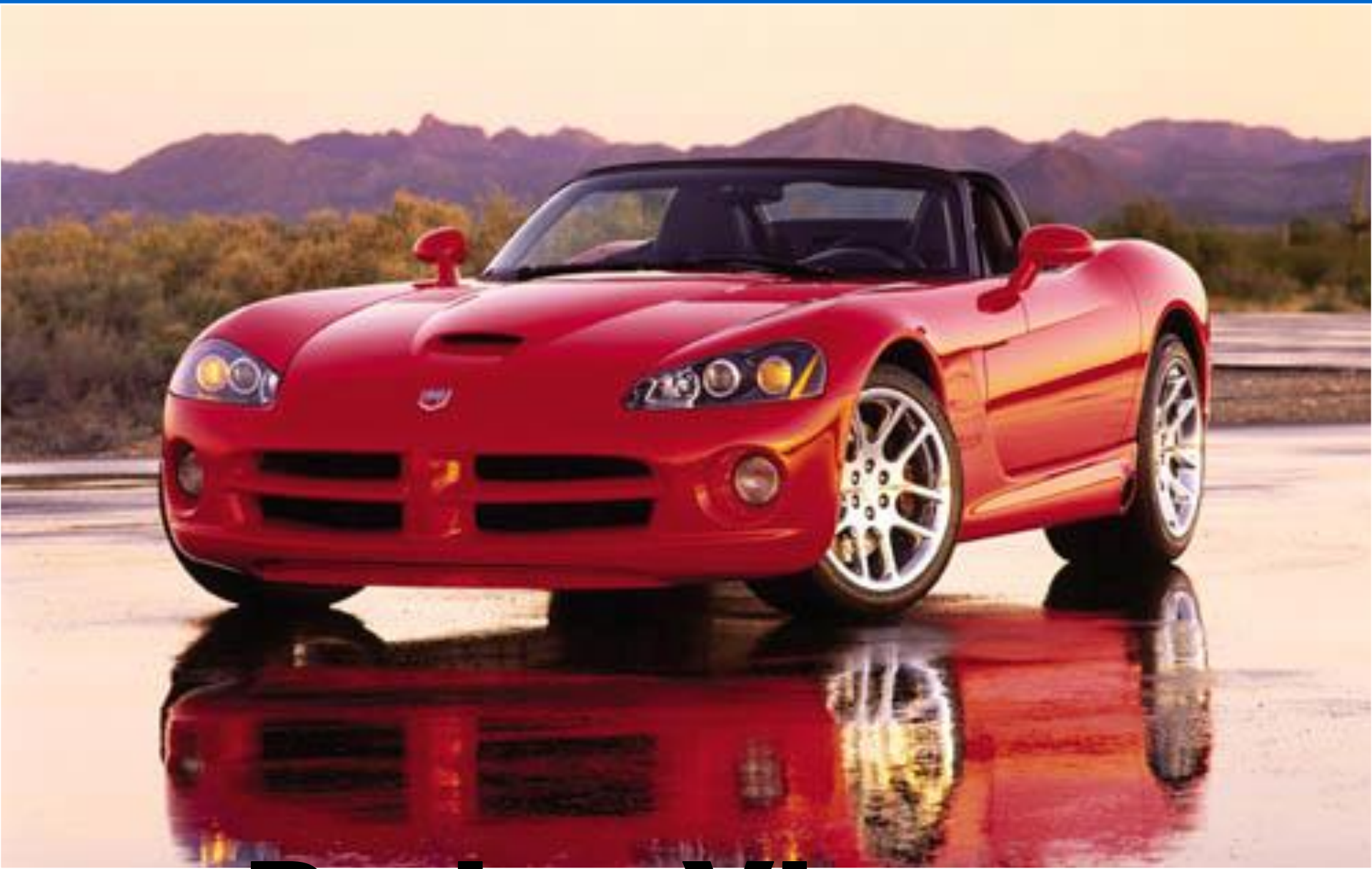




Mustang - 1965



Mustang - 1965



Dodge Viper



THE END