

VALENCIA COLLEGE COURSE LOGISTICS

COURSE SYLLABUS: BSC 2094C HUMAN ANATOMY AND PHYSIOLOGY II

4 credit hours Online
Session 02, 2022 CRN# 27879

Instructor: **Dr. Marlene Gillies**
I believe all students can learn; therefore, it is my goal to support your learning; please know, I am here to assist you throughout the course

Office: **407-582-5156 or 407-582-5149; Science Office AHS 231**
(*Note: This is the number for the main office (M-F), use for emergency contact and office personnel will reach me*)

E-mail: mgillies@valenciacollege.edu
(**Best method to reach me**) I will respond within 24-48 hours

Meetings **Zoom Meetings –OPTIONAL**
Monday Evenings 4:30-5:30

Office Hours: **Monday Evenings 4:00 pm – 4:30 pm**
During limited time of office hours, lecturing or tutoring is not possible. Please have a list of specific questions and be as specific as possible in order to best assist you.
(**Please contact me via email if you wish to schedule a meeting at a different time**)

Office hour meetings will be held via Zoom
Meetings may be recorded – permission is needed to record.

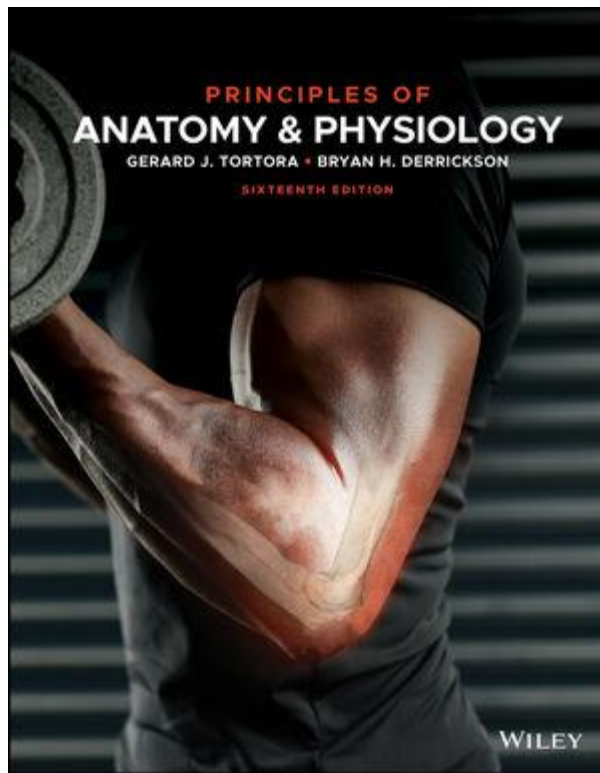
COURSE DESCRIPTION:

BSC 2094C is the second part of the Human Anatomy and Physiology course. A systems approach will be used in the course meaning that both the anatomy and physiology of a system will be covered. Systems studied include:

Ch. 19 Cardiovascular System: The Blood
Ch. 20 Cardiovascular System: The Heart

- Ch. 21 Cardiovascular System: Blood Vessels and Hemodynamics
- Ch. 22 The Lymphatic and Immune Systems
- Ch. 23 The Respiratory System
- Ch. 24 The Digestive System
- Ch. 25 Metabolism
- Ch. 26 The Urinary System
- Ch. 27 Fluid, Electrolyte, and Acid-Base Homeostasis
- Ch. 28 The Reproductive Systems
- Ch. 29 Development and Inheritance

REQUIRED TEXTS:



Principles of Anatomy and Physiology with only WileyPlus Canvas- 16th edition by Tortora & Derrickson (You will need WileyPlus code to access material) ISBN: 9781119704607 Publisher: Wiley

Power point slides, syllabus and course related materials are available through Canvas. Please visit the Canvas syllabus page from “Start Here” for a copy of the syllabus and system requirement to access all material.

GRADING POLICY: Point System

Final grade is based on **1200 POINTS**. Points earned come from various sources: (**Disclaimer:** Point distribution subject to change)

Task	Points
Exams Ch. 19-27	400
Final Exam Ch 28, 29 & cumulative	100
3-D Physiology	40
Animations	100
Real Anatomy-Lab	140
Power Physiology-Lab	60
Lab Reports	100
Chapter Assessments	200
Discussion Posts-Critical Thinking	60

Exams are taken directly from the power points, notes, text, resources and activities used throughout WileyPlus.

Exams are multiple formats which may include multiple choice, multiple selections, matching, fill-in the blank, dropdown, drag and drop, and short responses.

You must have web cam for exams/ Lockdown Browser or Honorlock will be used

GRADING SCALE:

Points	Percentage	Letter Grade
1080-1200	90 – 100%	A
960-1079	80 – 89%	B
840-959	70 - 79%	C
720-839	60 – 69%	D
0 - 719	0 - 59%	F

Per college policy, you must earn a grade of “C” or better in A&P I to be able to enroll in A & P II. Your learning and success throughout the course is important to me; therefore, guidelines, expectations and strategies for success are embedded here to guide and support you.

GUIDELINES AND EXPECTATIONS:

1. The human body is quite complex. Due to the rigorous pace and demands of this course, please try your best and give your full attention, participation and effort.

2. In order to confirm your enrollment in the course, please submit assignment prior to January 15, 2022 to prevent non-withdrawal for no show in the course. “No Show Period” is January 20 to January 29, 2022. Attendance must be taken – this is also important as a part of student financial aid. Please familiarize yourself with the college policy for withdrawal. While I will work with you; be mindful instructor may withdraw student for multiple absences.
.
3. While the assignments and course materials are online and available to work at your pace; there are **WEEKLY DUE DATES** on assignments, quizzes and exams (See Canvas Calendar and Syllabus Schedule). Please contact me via email if you fall behind in order for us to devise a plan to make sure that you can get caught up of missing work. Even though late work may be accepted, there will be a 10% deduction on your grade for late submissions. **No work more than one (1) week late will be accepted.**
4. **Reading assignments** (see course schedule). The e-text is available to support your reading whether to read for you, to highlight and or review. The text has resources that support vocabulary development and reading comprehension. The illustrations allow for you to download and have a verbal recording. There is a plethora of resources available through WileyPlus, be mindful of time management and organization in order for them to be effective supports for you.

5. Assessments: You will have opportunities for practice assessments

EXAMS will occur using RESPONDUS LOCKDOWN BROWSER or Honorlock – which uses a Web Camera.

Exams must be completed by the assigned due date. Missed exams will earn a grade of zero (0) unless there are extenuating circumstances. Please contact professor in the event you must miss a due date.

To ensure you have the opportunity to take all exams, please notify me **prior to the exam** if extraordinary circumstances develop that would prevent your sitting for the exam at the scheduled time. While I am willing to work with you, if satisfactory arrangement is not made with me prior to the exam, a grade of zero (0) may be given.

- All exam grades will count – the lowest grade **will not** be dropped under any circumstances.
- Medical excuses must be covered by a doctor's note.

6. To maintain privacy and confidentiality, grades will be discussed only between the student earning them and the instructor via Zoom meeting which may be recorded during office hours. Please note, permission must be given to record Zoom meetings. If you are unable to participate in meetings or unable to be recorded, please inform instructor.

7. Integrity and honesty are crucial especially in the health care arena as lives are at stake. You are upholding the integrity and honor of your chosen profession and it begins here as you journey towards your career as a member of your noble profession. What you say, do and how you interact with the content and others face-to-face or virtually sets the tone for our collaborative learning sessions together.

1. Please continue to maintain academic integrity and honesty as we embark on our learning experiences together. If at any time you may feel you need additional support with the content, please do not hesitate to contact me. *“Each student is required to follow Valencia policy regarding academic honesty. All work submitted by students is expected to be the result of the student’s individual thoughts, research, and self-expression unless the assignment specifically states ‘group project.’”*
2. Academic disputes – Students are encouraged to contact the Academic Dean or Office of the Ombudsman if any unresolved conflicts arise.

“Valencia College is committed to providing each student a quality educational experience. Faculty members have set high standards of instruction for themselves and for you. If you have a problem in a class, your first step is to talk to your instructor. If you are still dissatisfied, you may talk with the academic dean of the division for your class. We will work together to resolve any issues that arise.”

Drop/Refund deadline: January 18, 2022 @ 11:59 p.m.

No Show Period: January 20 – January 29, 2022

WITHDRAWAL DEADLINE:

The date for WITHDRAWAL WITHOUT PENALTY is

March 25, 2022 @ 11:59 pm

PLEASE FAMILIARIZE YOURSELF WITH THE COLLEGE POLICY

Per the College Catalog:

“You may withdraw from a class or all of your classes after the end of the official Drop/Add period, but before the mid-session withdrawal deadline. However, you are not eligible for a refund. If you owe the college any money, you will still have to pay that balance. Refer to the college <https://VCCatalog> for further information.”

Note: Students on financial aid should consult an advisor or counselor before withdrawing from a course. There may be financial implications which he or she must know about to make an informed decision before withdrawing from a course.

Students with some scholarships who withdraw or are withdrawn from a class must pay the college for the cost of the class. Other scholarship sponsors may also require repayment.

See LifeMap for support [LifeMap](#)

Policy: The final exam is the culmination of your learning experience in the course. Please note, it is **required** that you are present for the final exam.

Policy: Students who are absent and do not take the final exam will receive a grade of “F”.

SUCCESS STRATEGIES:

Your success throughout the course is extremely important. As a guide:

- Make a schedule and set aside 10-12 hours weekly and be prepared (text, resources, notes)
- Organize your time, material and create a study plan
- There is a great deal of material to learn. **Study daily** (Try to set aside 2-3 hours/day for studying and practice).

- Even remotely, form study groups or get a study-buddy when possible to compare notes, test each other etc.
- Seek help early
- WileyPlus has tutorials, quizzes, practice drills, flash cards, adaptive practice etc. (use what works best for you). **You do not have to use all the resources as it can be overwhelming**
- In addition to WileyPlus, there are many animations especially of the cardiovascular system (CVS) on sites such as YouTube
 - LifeMap – Students are encouraged to utilize LifeMap for resources and support. . [LifeMap](#)
 - SmartThinking Online tutoring service available through the college
 - Virtual Tutoring: [Virtual Tutoring](#)
 - Virtual Advising and Counseling: [Advising and Counseling](#)
- Valencia College offers a variety of Skillshops: short seminars covering a variety of topics which deal with student success, goals and purpose. To check out Valencia’s Skillshops offerings, go to: [Valencia Skillshops](#)
- **Email me for assistance/clarification/questions**
 - In these unprecedented times, the rigor of college courses; as well as; academic and nonacademic obligations may impart stress upon students. The college provides support and assistance through advisors and counselors. In the event of stress or feeling overwhelmed, please seek assistance and support through Student Services and or **Baycare Behavioral Health’s Student Assistance Program** (for private counseling).
 - *“Valencia is committed to making sure all our students have a rewarding and successful college experience. To that purpose, Valencia students can get immediate help that may assist them with psychological issues dealing with stress, anxiety, depression, adjustment difficulties, substance abuse, time management as well as relationship problems dealing with school, home or work. Students have 24 hour unlimited access to the **Baycare Behavioral Health’s confidential student assistance program** phone counseling services by calling **(800) 878-5470**. Three free confidential face-to-face counseling sessions are also available to students.”*

PLEASE DO NOT RECORD AND OR POST CLASS DISCUSSIONS, PROCEDURES, EXAMS, ETC ON THE INTERNET/SOCIAL MEDIA.

Please maintain netiquette, be respectful and address everyone in the course with the utmost respect. During discussions, Zoom meeting or interactions, the Peace and Justice Principles will be instituted [PJI Principles](#) (please listen intently, and allow others to express views even if differ from yours). Discussions should be focused on topics directly related to our course only.

VALENCIA STUDENT CORE COMPETENCIES:

The faculty of Valencia College has identified four core competencies that define the learning outcomes for a successful Valencia graduate. These competencies are at the heart of the Valencia experience and provide the context for learning and assessment at Valencia College. You will be given opportunities to develop and practice these competencies in this class.

This course will reinforce the following competencies:

THINK

Clearly, critically and creatively
Analyze, synthesize, integrate and evaluate in many domains of human inquiry.

VALUE

Make reasoned value judgments and responsible commitments.

COMMUNICATE

Communicate with different audiences using varied means.

ACT

Act purposefully, reflectively and responsibly.

STUDENTS WITH DISABILITIES:

Students with disabilities who qualify for academic accommodations **MUST** provide the professor with a letter from the Office of Students with Disabilities at the **start** of the term. The Office of Students with Disabilities determines accommodations based on appropriate documentation of disabilities.
West Campus SSB, Rm. 102 Phone: 407-582-1523 Fax: 407-582-1326

SECURITY STATEMENT

Please maintain confidentiality of personal information securely. Do not share yours or any personal or private information online, via social media or via any other means.

COURSE CONTENT

PowerPoint and Lecture Outline provided in Canvas

Modules - Each chapter is subdivided into subsets with: Learning Objectives, Access to e-text, Some with Interactivity, Animations and Practices

Assignments - Each chapter has **various graded** assignments with **due dates**. The assignments are in multiple forms and may require extensive time to complete. Please see calendar in Canvas and schedule in syllabus and manage your time accordingly.

Online Labs - using Real Anatomy, 3-D Physiology and Power Physiology through WileyPlus

**Power Physio are virtual laboratory activities that include lab pre-quiz, data collection, data analysis, and completion of laboratory report. You will need to allot time to perform and complete the activities. Completed Lab Report should be sent to instructor as an email attachment.

Assessments:

1. Quiz at the end of each chapter with due dates.
2. Exams with due date range will occur through Respondus Lockdown Browser or Honorlock system. Please pay attention to due dates and monitor course calendar.

Disclaimer:

Syllabus and/or course schedule may be altered at the discretion of the instructor.

Date	Activities	EXAM/Quiz Assessment Due Date
Week of 1/10/22- 1/14/22	Syllabus Review Review WileyPlus How to... Read Ch.19 Complete Ch.19 assignments	Assessment Ch. 19 1/14/22 Exam Ch. 19 (1/14/22-1/15/22)
1/17/22- 1/21/22	Read Ch. 20 Complete Ch.20 assignments	Assessment Ch. 20 1/20/22 Exam Ch. 20 (1/21/22-1/22/22)
1/17/22	College Holiday – MLK Day	

1/24/22- 1/28/22	Read Ch. 21 Complete Ch. 21 assignments	
1/31/22- 2/04/22	Read Ch. 21 Complete Ch. 21 assignments	Assessment Ch. 21 2/03/21 Exam Ch. 21 2/03/22-2/04/22)
2/07/22- 2/11/22	Read Ch.22 Complete Ch. 22 assignments	Assessment Ch. 22 2/11/22 Exam Ch. 22 (2/11/22-2/12/22)
2/14/22- 2/18/22	Read Ch. 23 Complete Ch. 23 assignments	Assessment Ch. 23 2/18/22 Exam Ch. 23 (2/18/22-2/19/22)
2/21/22- 2/25/22	Read Ch. 24 Complete Ch. 10 assignments	
2/28/22- 3/04/22	Read Ch. 24 Complete Ch.24 assignments	Assessment Ch. 24 3/02/22 Exam Ch. 24 (3/03/22-3/04/22)
3/07/22- 3/13/22	No Classes- Spring Break	
3/14/22- 3/18/22	Read Ch. 25 Complete Ch. 25 assignments	Assessment Ch. 25 3/17/21 Exam Ch. 25 (3/18/22-3/19/22)
3/21/22- 3/25/22	Read Ch. 26 Complete Ch. 26 assignments	
3/28/22- 4/01/22	Read Ch. 26 Complete Ch. 26 assignments	Assessment Ch. 26 3/30/21 Exam Ch. 26 (3/31/22-4/01/22)
4/04/22- 4/08/22	Read Ch. 27 Complete Ch. 27 assignments	Assessment Ch. 27 4/07/22 Exam Ch. 27 (4/07/22-4/08/22)
4/11/22- 4/15/22	Read Ch. 28 Complete Ch. 28 assignments	Assessment Ch. 28 4/15/22
4/18/22- 4/22/22	Read Ch. 29 Complete Ch. 29 assignments	Assessment Ch. 29 4/22/22
4/25/22- 4/27/22	FINAL EXAM – COMPREHENSIVE WITH MAIN FOCUS CH 28 AND 29	FINAL EXAM – COMPREHENSIVE WITH MAIN FOCUS CH 28 AND 29

Valencia College A&P II Course Outcome

BSC 2094C is the second part of the Human Anatomy and Physiology course. A systems approach will be used in the course meaning that both the anatomy and physiology of a system will be covered. Concepts studied include: Scientific method, biochemical processes of life, cells, tissues, structure and function of cardiovascular, lymphatic, respiratory, digestive, urinary and reproductive systems. Lab exercises emphasize anatomic and physiologic principles associated

with classroom assignments.

This course meets the General Education science requirement for graduation.

1. Students will be able to recognize and identify the components of cells, tissues and listed organ systems.

- Student will be able to identify the components of cells, tissues and listed organ systems in histologic specimens.
- Student will be able to identify the components of cells, tissues and listed organ systems on models.
- Student will be able to identify the components of cells, tissues and listed organs systems on dissected specimens.

2..

- Student will be able to recognize the relationship between the histologic appearance and the function of the cells and tissues.
- Student will be able to recognize the relationship between the gross anatomy and the function of the tissues and listed organ systems.
- Student will be able to understand the functions of each organelle of the cell.
- Student will be able to understand the functional organization of the cells in tissues.
- Student will be able to understand the functional organization of the tissues in the listed organ systems.
- Student will be able to understand the functions of each listed organ system.
-

3. Students will be able to recognize the interrelationships of the systems studied.

- Student will be able to understand the interrelationships of the listed organ systems for proper functioning.
- Student will be able to understand the relationship and effect of the integumentary system on each of the other listed organ systems.
- Student will be able to understand the relationship and effect of the skeletal system on each of the other listed organ systems.
- Student will be able to understand the relationship and effect of the muscular system on each of the other listed organ systems.
- Student will be able to understand the relationship and effect of the nervous system on each of the other listed organ systems.
- Student will be able to understand the relationship and effect of the endocrine system on each of the other listed organ systems.

4. Students will be able to apply the information and integrate that information into common life situations.

- Student will be able to understand how the proper functioning of each listed system leads to health.
- Student will be able to understand how the improper functioning of any of the listed systems will result in disease.
- Student will be able to relate the effects of the environment to the functioning of each listed

system.

- Student will be able to relate the effects of injury to the proper functioning of each listed system.
- Student will be able to relate signs and symptoms of disease to the physiology of each listed system.

5. Students will be able to utilize the scientific method to perform the necessary skills to create and analyze laboratory data.

- Student will be able to understand the concepts of the scientific method.
- Student will be able to demonstrate the ability to complete a laboratory experiment.
- Student will be able to analyze the laboratory data and arrive at a conclusion to understand the concept under investigation.